

# PART ONE

## making the F

### -Type the letter F

Myriad Pro Bold 300 pts

### -Create outlines

Type > create outlines

### -Pen Delete Anchor Point Tool

Delete right point at baseline of F

### -Direct Selection Tool

Drag left point down holding shift

### -Pen Tool

Create zig zag holding shift

### -Select all

Pathfinder Divide

### -Direct Selection Tool

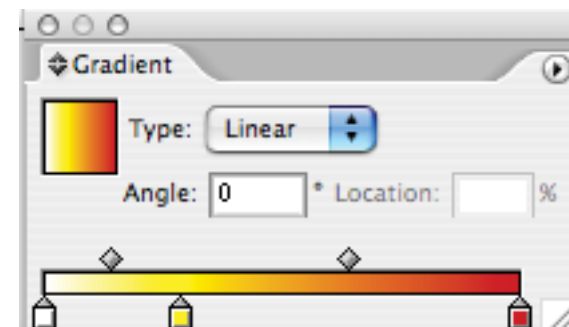
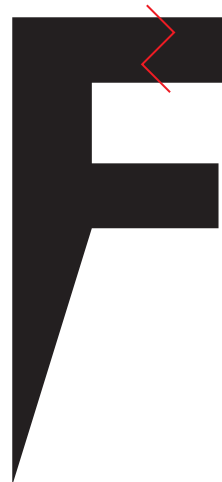
Move part to the right

### -Gradient Palate

Use Gradient Tool to give direction

### -Stroke

Apply a 2.5 pt black stroke to F



# PART TWO

## making the Snowman

### -Rounded Rectangle Tool

Click on desktop

Width: 3, Height: 5.75, Radius: 5

Fill: yellow, Stroke: orange Weight: 5

### -Make 3 perfect circles

Fill: orange, Stroke: red, Weight: 3

Overlap 3 circles

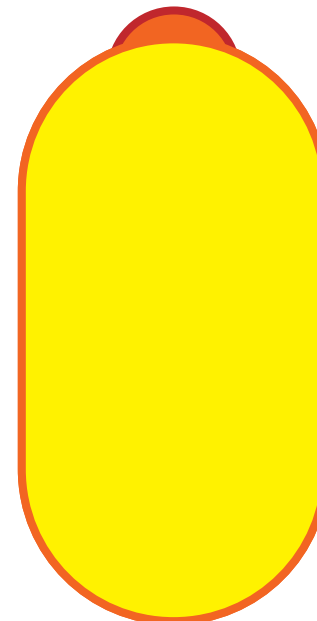
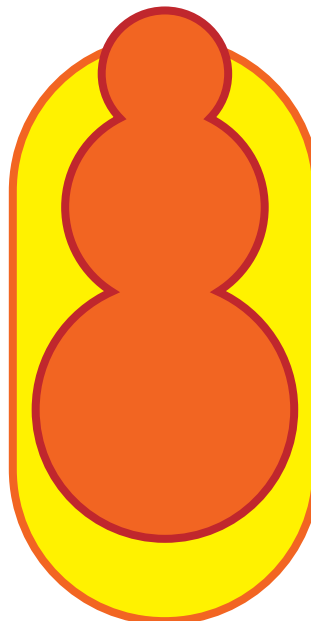
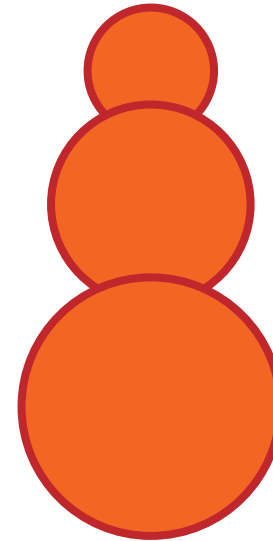
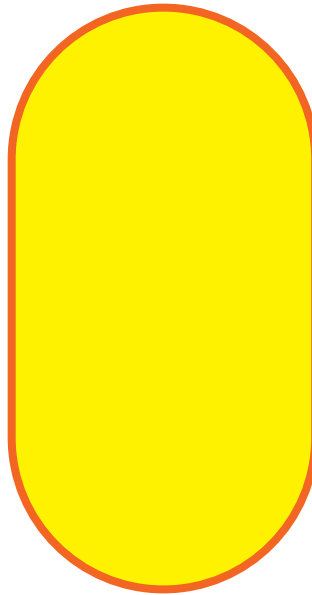
Pathfinder add

### -Put snowman over rectangle

Copy rectangle, paste in front

Select top rectangle and snowman

Object > clipping mask > make



# PART THREE

## making rings

### -Eliptical Tool

Click once on artboard

3"w x 3"h

Fill: none, Stroke: red, Weight: 8

### -Copy and paste another circle

Fill: none, Stroke: orange, Weight 8

### -Overlap circles

### -Scissor Tool

Click once on red ring, left side of orange ring

Click once on red ring, right side of orange ring

Select part that was cut and press delete

### -Scissor Tool

Click once on orange ring, left side of red ring

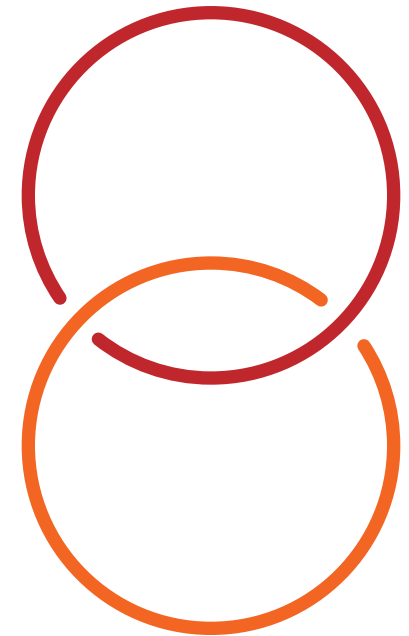
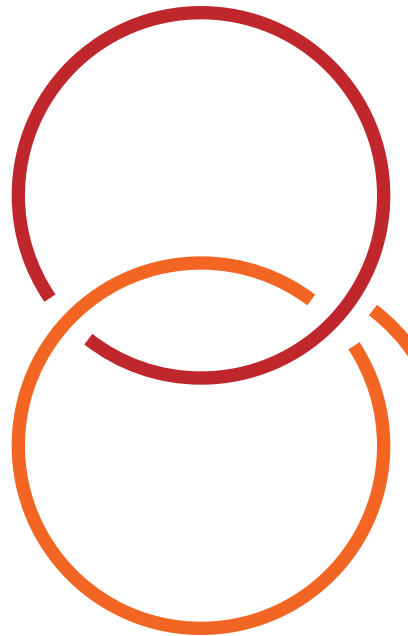
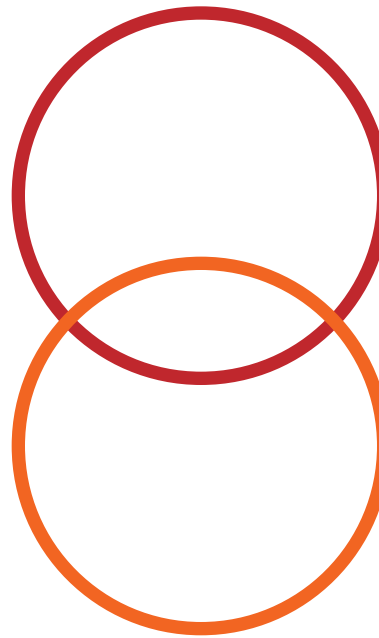
Click once on orange ring, right side of red ring

Select part that was cut and press delete

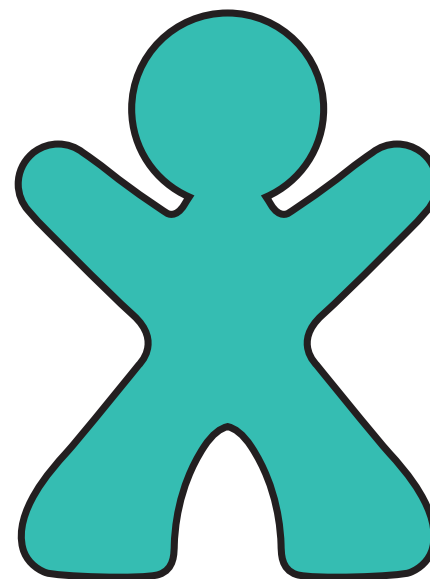
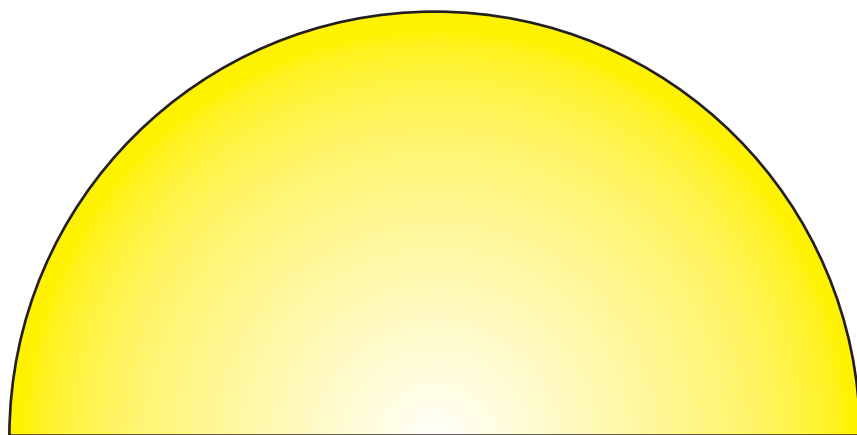
### -Stroke Palate

Select all

Round cap



**LIBERTY**



# PART FOUR

## making liberty

-Type out LIBERTY in all caps

Myriad Pro Bold 100 pts

-Create outlines

Type > create outlines

-Line Tool

Make two straight lines

-Select all

Pathfinder divide

-Direct Selection Tool

Select each section and color



# PART FIVE

## making the sun

### -Eliptical Tool

Click once on artboard

Width: 5, Height: 5

### -Color

Fill: yellow, Stroke: Black, Weight: 1

### -Rectangle Tool

Overlap bottom portion of circle

### -Pathfinder Palate

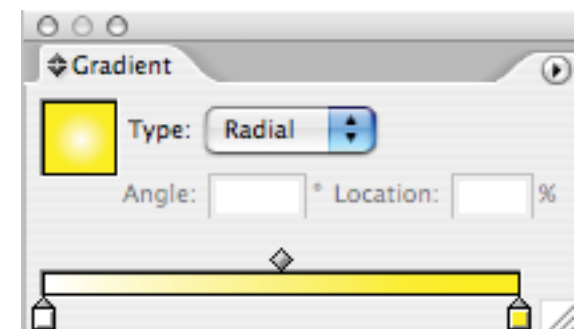
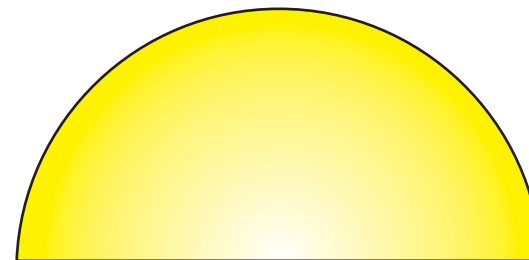
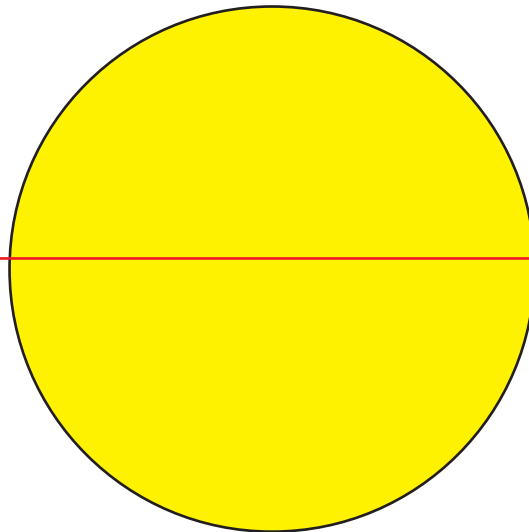
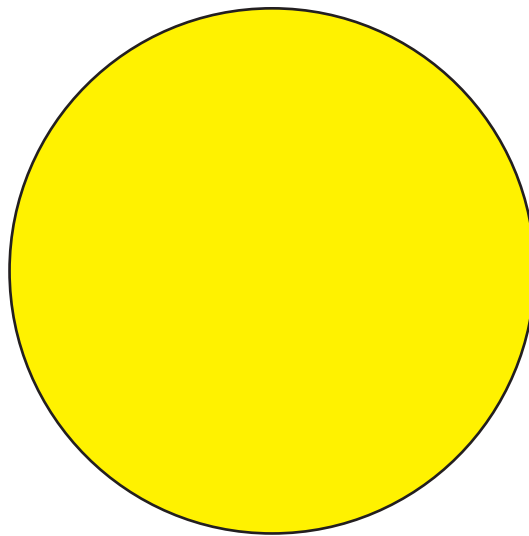
Select all

Pathfinder subtract

### -Gradient Palate

Type: radial

Gradient Tool to give direction



# PART SIX

## making the man

### -Reflect Tool

Select man

Option click on right side of body

Axis: vertical Make: copy

### -Overlap bodies

Select all

Pathfinder add

### -Elptical Tool

Click once on artboard

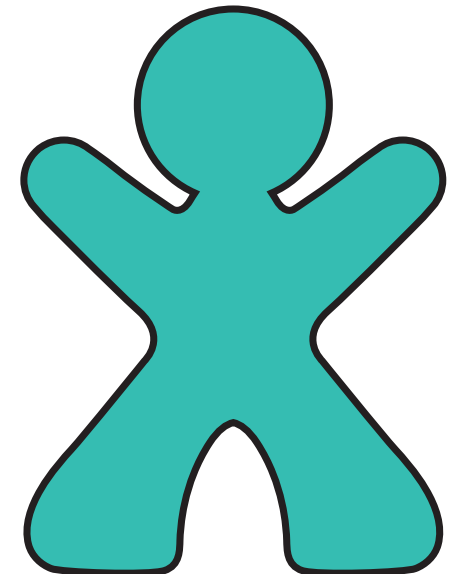
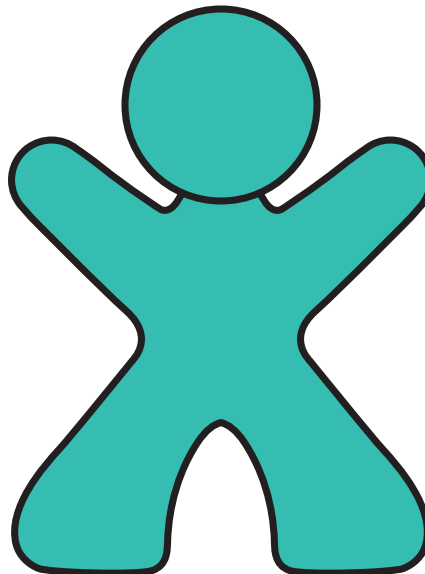
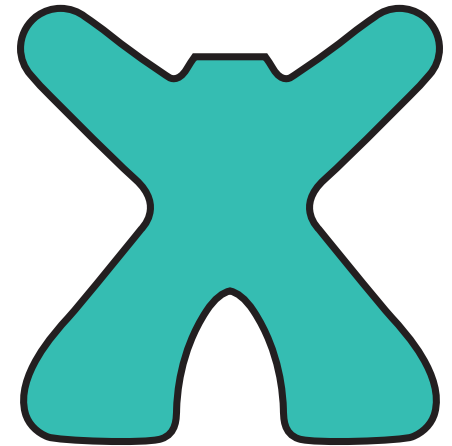
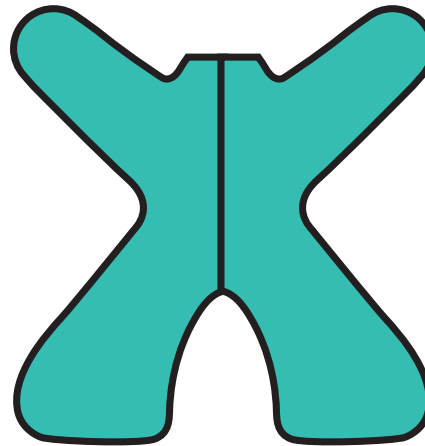
Width: 1, Height: 1

Same fill and stroke

### -Overlap circle and body

Select all

Pathfinder add





# PART SEVEN

## making the banana

### -Pen Tool (P)

Fill of none, Stroke of black

Click and drag

Click on gray dot and drag to red dot



### -Convert Anchor Point Tool (Shift C)

Click and drag on point to make handles

### -Add Anchor Point Tool (+)

Click on line to add points

### -Delete Anchor Point Tool (-)

Click on point to delete points

